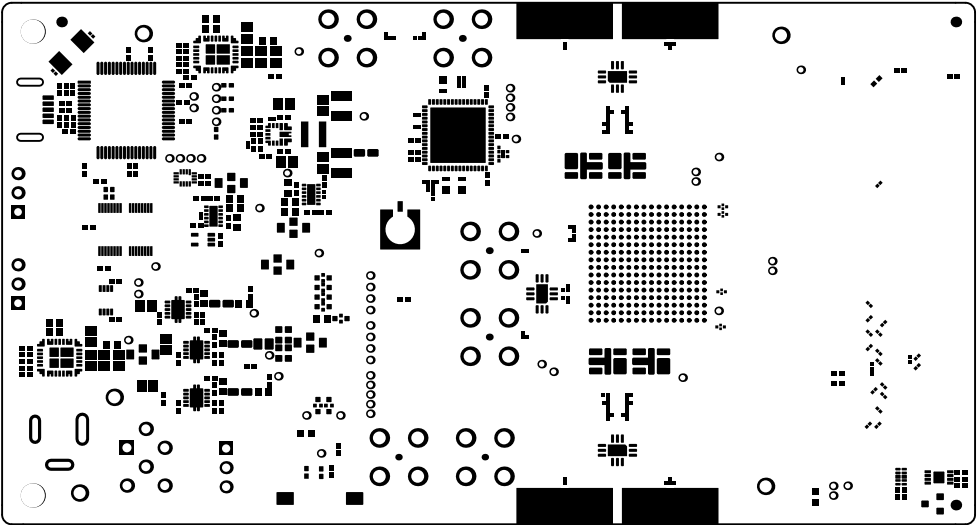
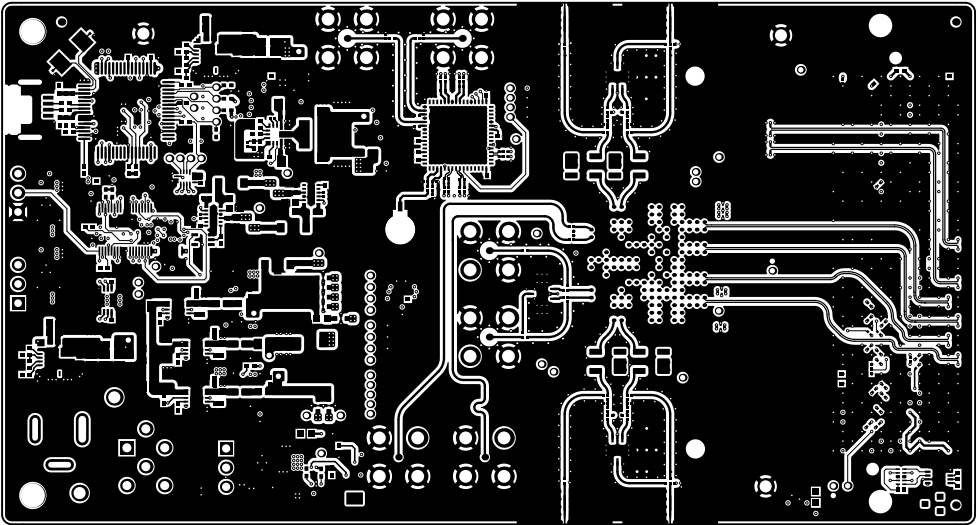


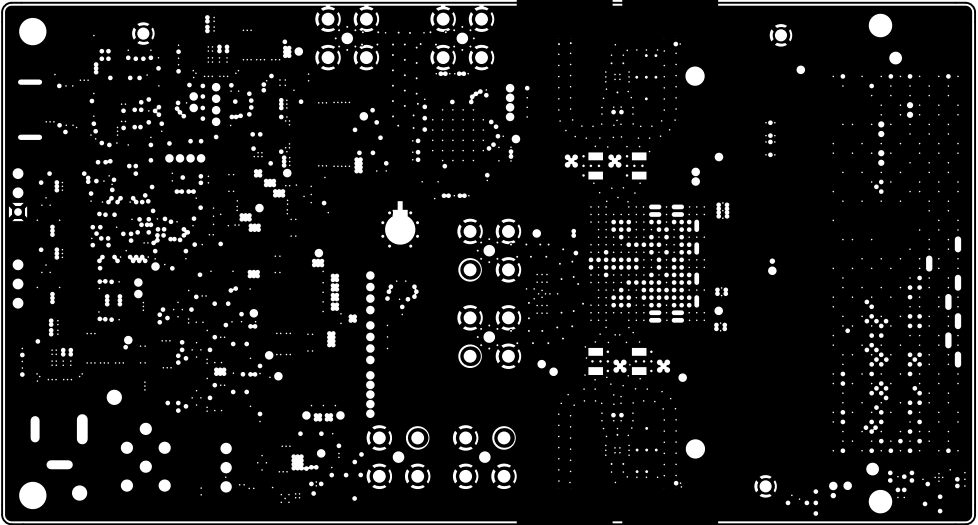
ALL ARTWORK VIEWED FROM TOP SIDE	BOARD #: DC296	REV: C	SUN REV: 19d4981ddb086ff8bf54eda0da4b712757db4ff1 [Locally Modified]
LAYER NAME = Top Overlay			
PLOT NAME = Top Overlay	GENERATED : 3/24/2025 9:59:35 AM	TEXAS INSTRUMENTS	



ALL ARTWORK VIEWED FROM TOP SIDE	BOARD #: DC296	REV: C	SUN REV: 19d4981ddb086ff8bf54eda0da4b712757db4ff1 [Locally Modified]
LAYER NAME = Top Solder			
PLOT NAME = Top Solder Mask	GENERATED : 3/24/2025 9:59:35 AM	TEXAS INSTRUMENTS	

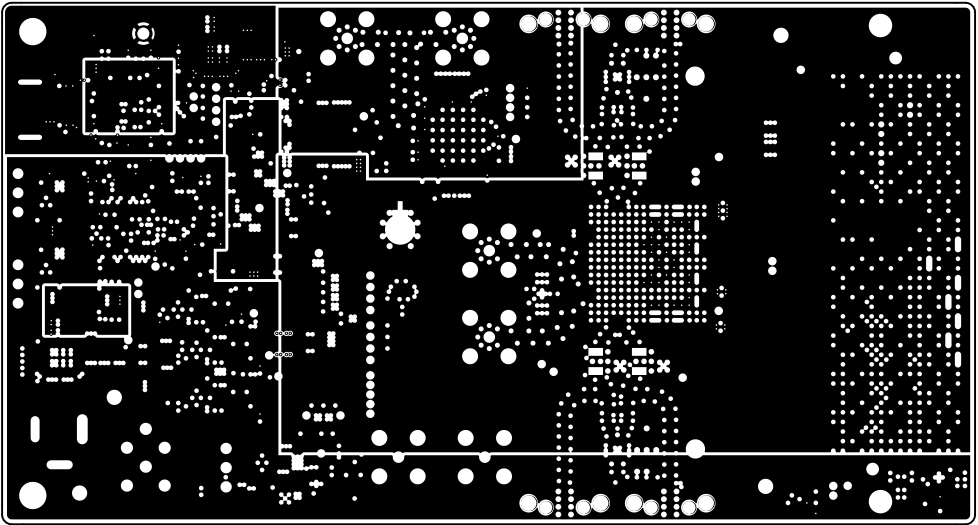


ALL ARTWORK VIEWED FROM TOP SIDE	BOARD #: DC296	REV: C	SUN REV: 19d4981ddb086ff8bf54eda0da4b712757db4ff1 [Locally Modified]
LAYER NAME = Top Layer			
PLOT NAME = Top Layer	GENERATED : 3/24/2025 9:59:36 AM	TEXAS INSTRUMENTS	

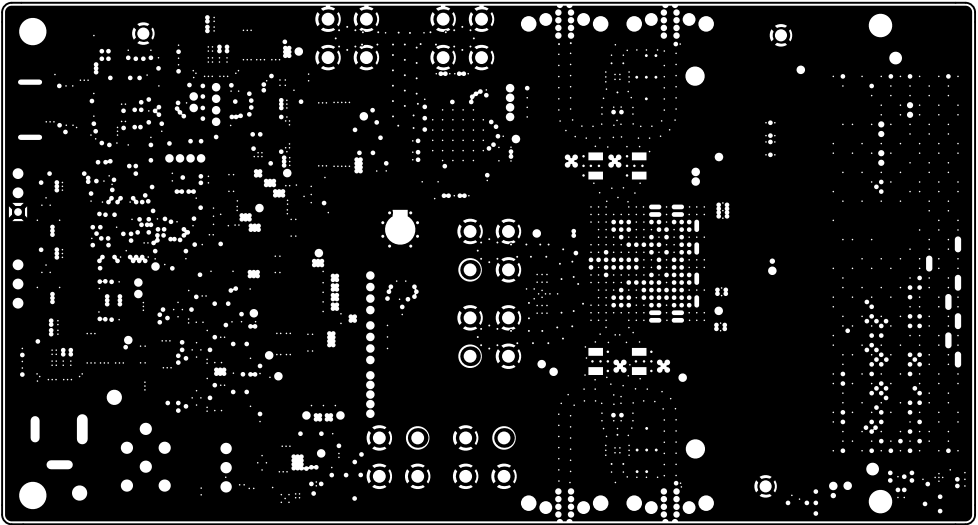


ALL ARTWORK VIEWED FROM TOP SIDE	BOARD #: DC296	REV: C	SUN REV: 19d4981ddb086ff8bf54eda0da4b712757db4ff1 [Locally Modified]
LAYER NAME = L2 GND1			
PLOT NAME = Signal Layer 1	GENERATED : 3/24/2025 9:59:36 AM	TEXAS INSTRUMENTS	

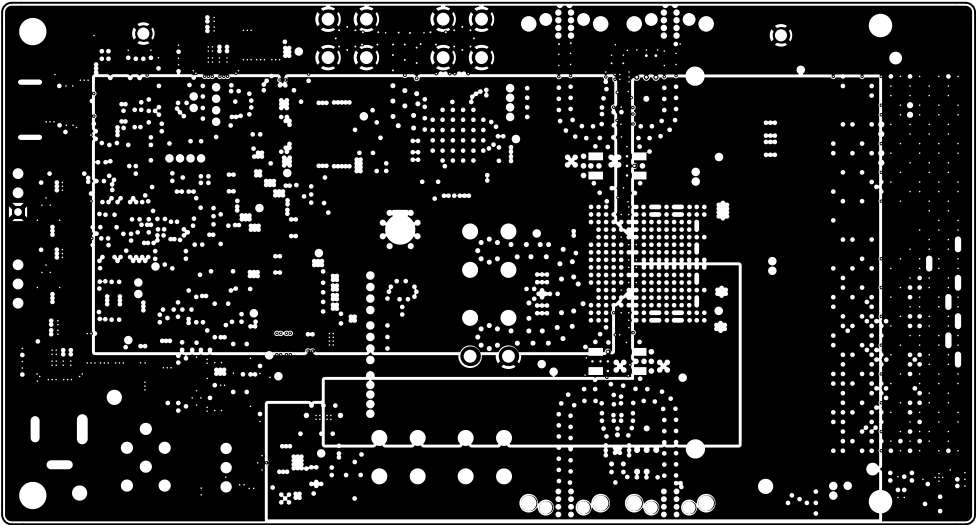




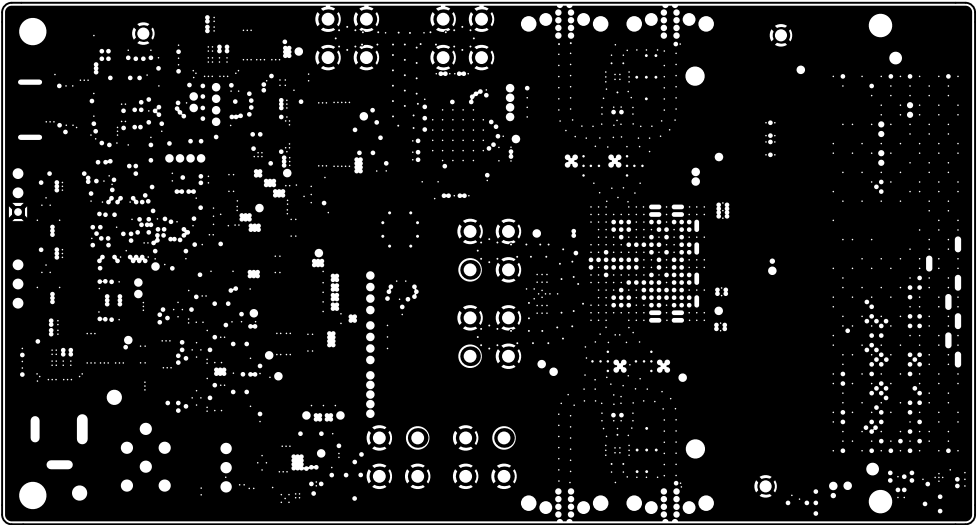
ALL ARTWORK VIEWED FROM TOP SIDE	BOARD #: DC296	REV: C	SUN REV: 19d4981ddb086ff8bf54eda0da4b712757db4ff1 [Locally Modified]
LAYER NAME = L3 PWR1			
PLOT NAME = Signal Layer 2	GENERATED : 3/24/2025 9:59:36 AM	TEXAS INSTRUMENTS	



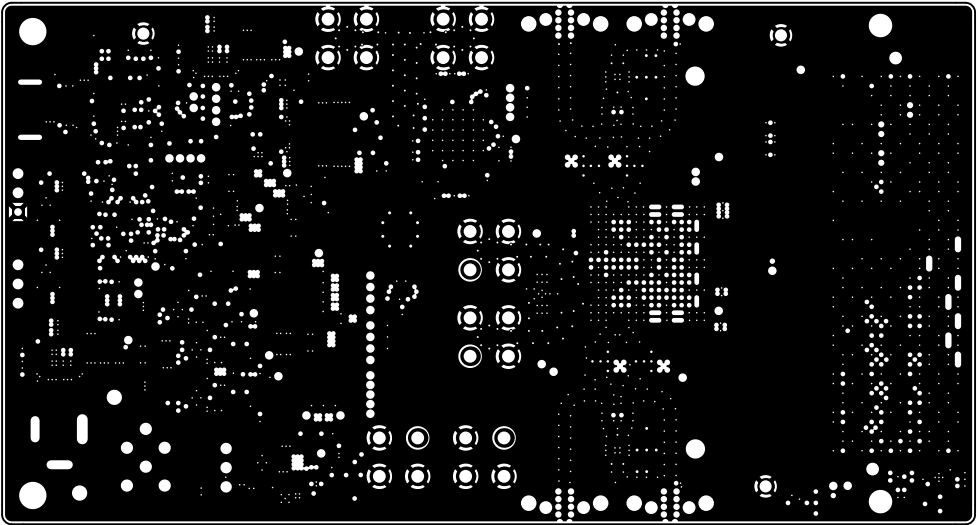
ALL ARTWORK VIEWED FROM TOP SIDE	BOARD #: DC296	REV: C	SUN REV: 19d4981ddb086ff8bf54eda0da4b712757db4ff1 [Locally Modified]
LAYER NAME = L4 GND2			
PLOT NAME = Signal Layer 3	GENERATED : 3/24/2025 9:59:36 AM	TEXAS INSTRUMENTS	



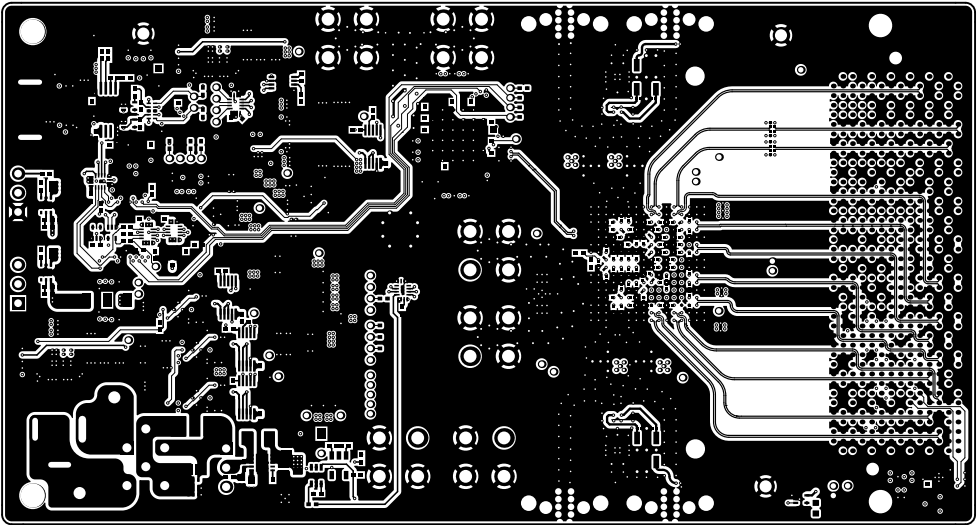
ALL ARTWORK VIEWED FROM TOP SIDE	BOARD #: DC296	REV: C	SUN REV: 19d4981ddb086ff8bf54eda0da4b712757db4ff1 [Locally Modified]
LAYER NAME = PWR2			
PLOT NAME = Signal Layer 4	GENERATED : 3/24/2025 9:59:36 AM	TEXAS INSTRUMENTS	



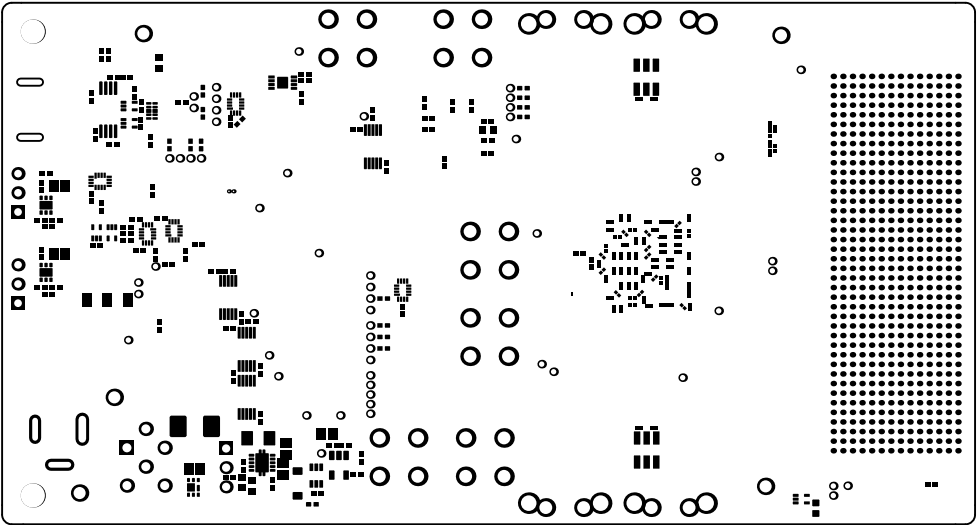
ALL ARTWORK VIEWED FROM TOP SIDE	BOARD #: DC296	REV: C	SUN REV: 19d4981ddb086ff8bf54eda0da4b712757db4ff1 [Locally Modified]
LAYER NAME = L6 GND3			
PLOT NAME = Signal Layer 5	GENERATED : 3/24/2025 9:59:36 AM	TEXAS INSTRUMENTS	



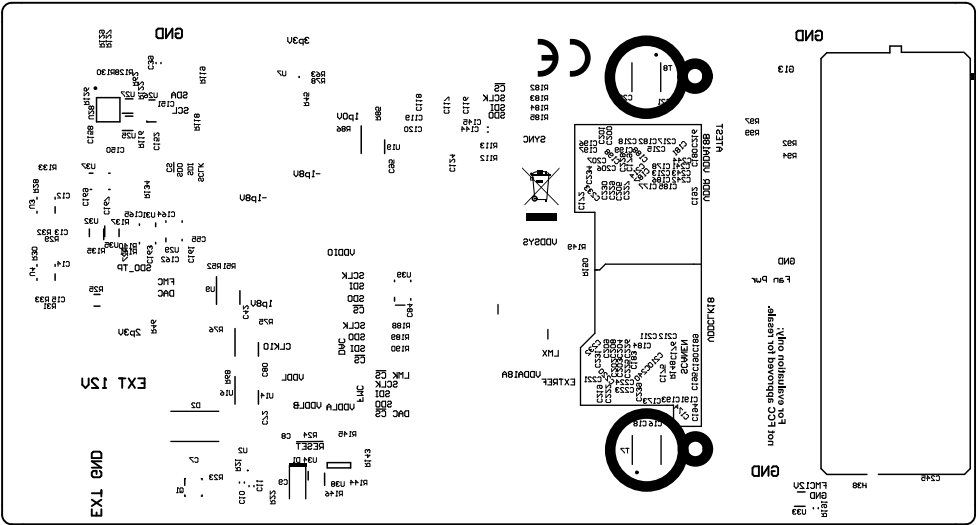
ALL ARTWORK VIEWED FROM TOP SIDE	BOARD #: DC296	REV: C	SUN REV: 19d4981ddb086ff8bf54eda0da4b712757db4ff1 [Locally Modified]
LAYER NAME = L11 GND6			
PLOT NAME = Signal Layer 6	GENERATED : 3/24/2025 9:59:36 AM	TEXAS INSTRUMENTS	



ALL ARTWORK VIEWED FROM TOP SIDE	BOARD #: DC296	REV: C	SUN REV: 19d4981ddb086ff8bf54eda0da4b712757db4ff1 [Locally Modified]
LAYER NAME = Bottom Layer			
PLOT NAME = Bottom Layer	GENERATED : 3/24/2025 9:59:36 AM	TEXAS INSTRUMENTS	

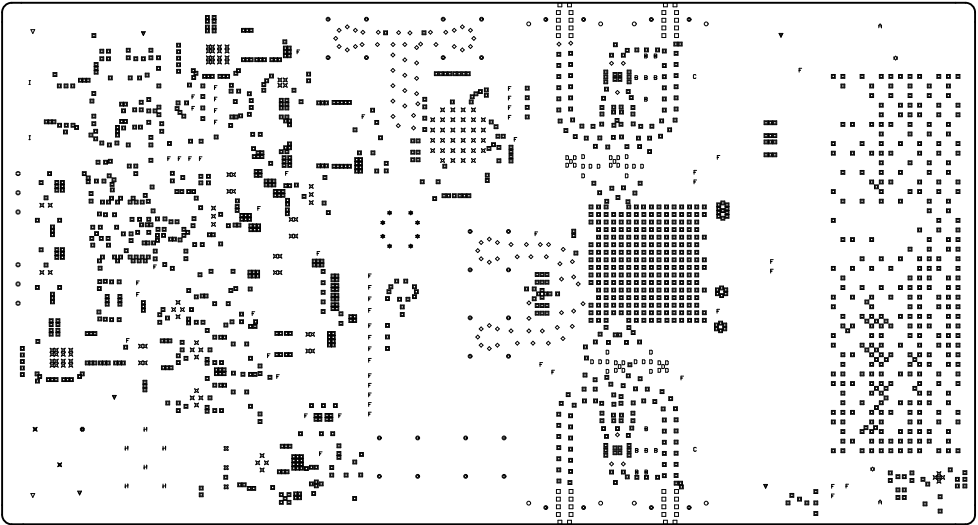


ALL ARTWORK VIEWED FROM TOP SIDE	BOARD #: DC296	REV: C	SUN REV: 19d4981ddb086ff8bf54eda0da4b712757db4ff1 [Locally Modified]
LAYER NAME = Bottom Solder			
PLOT NAME = Bottom Solder Mask	GENERATED : 3/24/2025 9:59:36 AM	TEXAS INSTRUMENTS	



ALL ARTWORK VIEWED FROM TOP SIDE	BOARD #: DC296	REV: C	SUN REV: 19d4981ddb086ff8bf54eda0da4b712757db4ff1 [Locally Modified]
LAYER NAME = Bottom Overlay			
PLOT NAME = Bottom Overlay	GENERATED : 3/24/2025 9:59:36 AM	TEXAS INSTRUMENTS	



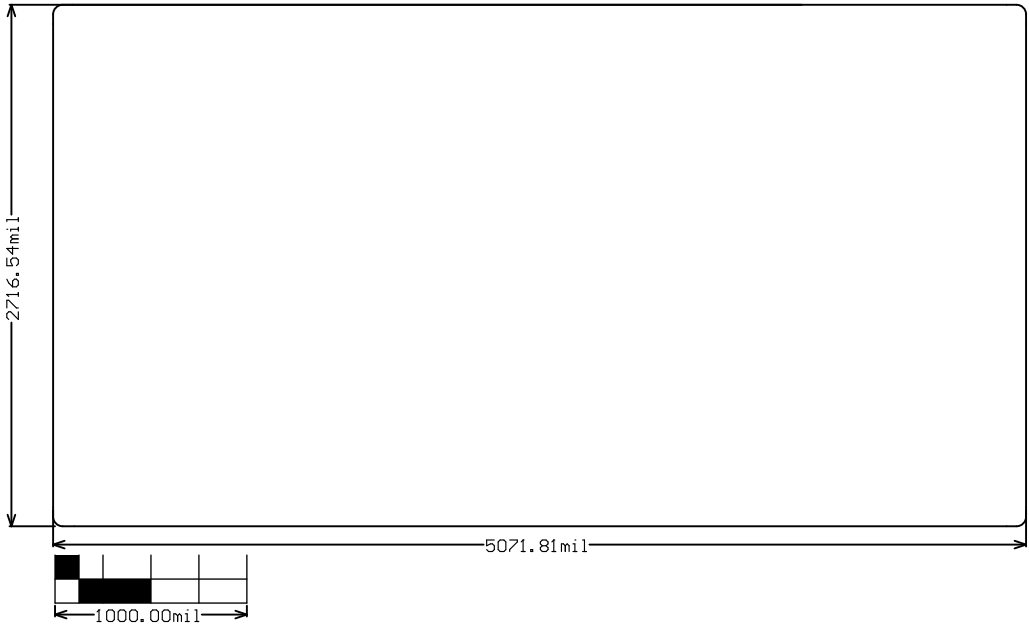


Drill Drawing

Symbol	Quantity	Finished Hole Size	Plated	Hole Type	Drill Layer Pair	Hole Tolerance
⚙	2	50.00mil (1.270mm)	NPTH	Round	Top Layer - Bottom Layer	
Ⓐ	2	105.91mil (2.690mm)	NPTH	Round	Top Layer - Bottom Layer	
▽	2	125.98mil (3.200mm)	NPTH	Round	Top Layer - Bottom Layer	
⊠	119	7.87mil (0.200mm)	PTH	Round	Top Layer - Bottom Layer	
■	1558	8.00mil (0.203mm)	PTH	Round	Top Layer - Bottom Layer	
◇	92	10.00mil (0.254mm)	PTH	Round	Top Layer - Bottom Layer	
□	40	12.00mil (0.305mm)	PTH	Round	Top Layer - Bottom Layer	
D	40	12.99mil (0.330mm)	PTH	Round	Top Layer - Bottom Layer	
B	12	15.00mil (0.381mm)	PTH	Round	Top Layer - Bottom Layer	
⚙	8	15.75mil (0.400mm)	PTH	Round	Top Layer - Bottom Layer	
F	57	28.00mil (0.711mm)	PTH	Round	Top Layer - Bottom Layer	
⊕	6	40.00mil (1.016mm)	PTH	Round	Top Layer - Bottom Layer	
⊗	3	42.91mil (1.090mm)	PTH	Round	Top Layer - Bottom Layer	
H	6	47.24mil (1.200mm)	PTH	Round	Top Layer - Bottom Layer	
▽	5	63.00mil (1.600mm)	PTH	Round	Top Layer - Bottom Layer	
⊙	32	66.93mil (1.700mm)	PTH	Round	Top Layer - Bottom Layer	
○	8	81.00mil (2.057mm)	PTH	Round	Top Layer - Bottom Layer	
C	2	84.00mil (2.134mm)	PTH	Round	Top Layer - Bottom Layer	
I	2	27.56mil (0.700mm)	PTH	Slot	Top Layer - Bottom Layer	
⊠	2	29.92mil (0.760mm)	PTH	Slot	Top Layer - Bottom Layer	
⚙	1	39.76mil (1.010mm)	PTH	Slot	Top Layer - Bottom Layer	
	1999 Total					

Slot definitions : Routed Path Length = Calculated from tool start centre position to tool end centre position,  
Hole Length = Routed Path Length + Tool Size = Slot length as defined in the PCB layout

ALL ARTWORK VIEWED FROM TOP SIDE	BOARD #: DC296	REV: C	SUN REV: 19d4981ddb086ff8bf54eda0da4b712757db4ff1 [Locally Modified]
LAYER NAME =			
PLOT NAME = Drill Drawing	GENERATED : 3/24/2025 9:59:36 AM	TEXAS INSTRUMENTS	



ALL ARTWORK VIEWED FROM TOP SIDE	BOARD #: DC296	REV: C	SUN REV: 19d4981ddb086ff8bf54eda0da4b712757db4ff1 [Locally Modified]
LAYER NAME = M2 Board Dimensions			
PLOT NAME = Board Dimensions	GENERATED : 3/24/2025 9:59:37 AM	TEXAS INSTRUMENTS	